

Communities in Action

LOUISIANA REGION 6: ALEXANDRIA

WHAT YOU CAN DO IN YOUR COMMUNITY



From tackling chronic diseases to making healthcare more accessible, there are ways to make life healthier for everyone.

Here are Region 6's opportunities for improvement: Region 6 parishes that are over the 25th percentile in the Healthy State-identified priority of...

- **Smoking**
- **Hypertension and/or Diabetes**
- **Food Security**
- **Physical Inactivity and/or Obesity**

Feedback from the latest Community Health Needs Assessment showed the following needs:

- Specialty care & chronic disease management
- Behavioral health
- Pediatric access
- Early education
- Food access
- Reduce smoking & vaping

Recommendations

1) Smoking Cessation

- Advocate for smoke-free ordinances and increase access to smoking education, counseling, and medication in Catahoula, Concordia, and Avoyelles parishes.

2) Cancer Screening and Treatment

- Increase access to cancer health education, screening and treatment for lung, breast, and colorectal cancer in LaSalle, Grant, and Avoyelles parishes.

3) Diabetes and Hypertension Management

- Increase access to diabetes and hypertension management & health education and improve provider trust and cultural competency in Winn, Concordia, and Avoyelles parishes.

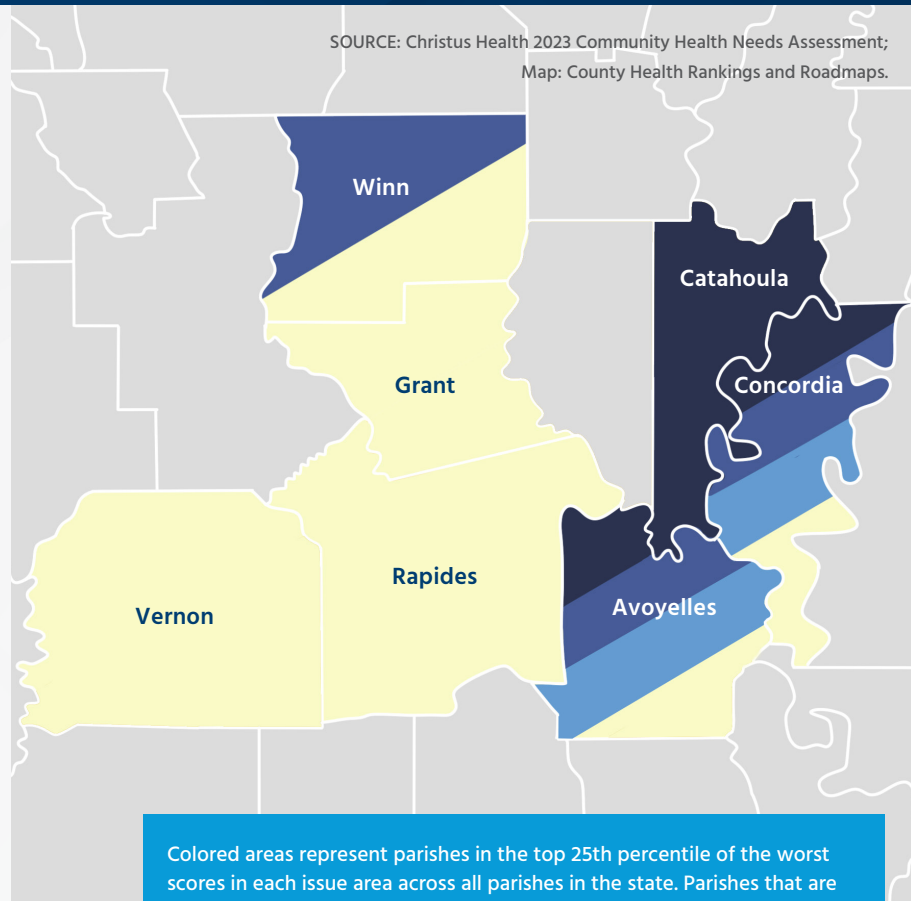
4) Obesity

- Increase access to obesity, physical activity, and nutrition interventions in Vernon, Rapides, Grant, Winn, Avoyelles, and Concordia parishes.

5) Food Security

- Partner with the Louisiana Department of Children and Family Services to promote and increase participation in food-related public benefits such as Supplemental Nutrition Assistance Program (SNAP), Elderly Simplified Application Project for SNAP, Women, Infants and Children program (WIC) in Concordia and Avoyelles parishes.

SOURCE: Christus Health 2023 Community Health Needs Assessment;
Map: County Health Rankings and Roadmaps.



Become a Department of Children and Family Services (DCFS) Community Partner by contacting the community outreach team at the QR code.



6) Income and Poverty

- Create career pathways that result in high-wage, high-demand jobs:
 - General and operations managers
 - Registered nurses
 - First line supervisors - construction trade and extraction

Find out more about our work and how you can improve your own health at LiveHealthyState.org.

Scan the QR code below:

